



Injection Molded Dimension References:

- G** = (LAYING LENGTH) Intersection of center lines to bottom of socket/thread; 90° elbows, tees, crosses; ± 1/32 inch.
- H** = Intersection of center lines to face of fitting; 90° elbows tees, crosses; ± 1/32 inch.
- J** = Intersection of center lines to bottom of socket/thread; 45° elbows; ± 1/32 inch

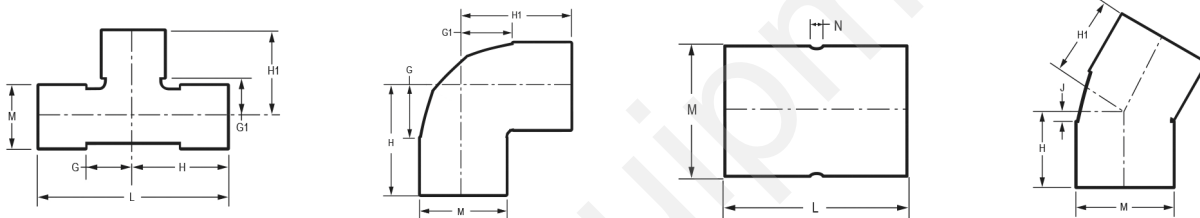
- L** = Overall length of fittings; ± 1/16 inch.
- M** = Outside diameter of socket/thread hub; ± 1/16 inch.
- N** = Socket bottom to socket bottom; couplings; ± 1/16 inch.
- W** = Height of cap; ± 1/16 inch.

Fabricated Dimension References:

- G** = (LAYING LENGTH) Intersection of center lines to bottom of socket/thread; 90° elbows, tees, crosses; ± 1/4 inch; 14" & larger ± 1/2 inch.
- H** = Intersection of center lines to face of fitting; 90° elbows, tees, crosses; ± 1/4 inch.; wyes ± 1/2 inch; 14" & larger ± 1/2 inch.
- J** = Intersection of center lines to bottom of socket/thread; 45° elbows; ± 1/4 inch; 14" & larger ± 1/2 inch.

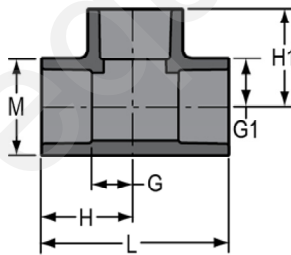
- L** = Overall length of fittings; ± 1/2 inch.; wyes ± 1 inch; 14" & larger ± 1 inch.
- M** = Outside diameter of socket/thread hub; ± 1/4 inch.
- N** = Socket bottom to socket bottom; couplings; ± 1/2 inch.
- W** = Height of cap; ± 1/4 inch.

Typical Fabricated Dimension References



Tee

Socket x Socket x Socket



Part Number	Size	G	G1	H	H1	L	M	Approx. Wt. (Lbs.)
801-002	1/4	11/32	11/32	31/32	31/32	1-31/32	27/32	.03
801-003	3/8	15/32	15/32	1- 1/4	1- 1/4	2- 1/2	31/32	.06
801-005	1/2	17/32	17/32	1-15/32	1-15/32	2-15/16	1- 3/16	.10
801-007	3/4	11/16	11/16	1-11/16	1-11/16	3- 3/8	1-13/32	.15
801-010	1	7/8	7/8	2	2	4	1- 3/4	.25
801-012	1-1/4	1- 1/32	1- 1/32	2- 9/32	2- 9/32	4-19/32	2- 3/32	.39
801-015	1-1/2	1- 3/16	1- 3/16	2- 9/16	2- 9/16	5- 1/8	2- 3/8	.51
801-020	2	1-7/16	1-7/16	2-15/16	2-15/16	5-7/8	2- 7/8	.79
801-025	2-1/2	1- 3/4	1- 3/4	3- 1/2	3- 1/2	7	3-15/32	1.58
801-030	3	2- 1/16	2- 1/16	3-31/32	3-31/32	7-15/16	4- 5/32	2.14
801-040	4	2- 1/2	2- 1/2	4- 3/4	4- 3/4	9- 1/2	5- 1/4	3.51
801-050	5	3- 5/32	3- 5/32	5-25/32	5-25/32	11-19/32	6-13/32	5.80
801-050F	5	5- 1/2	5- 1/2	8- 1/2	8- 1/2	17	6- 5/16	13.25
801-060	6	3-25/32	3-25/32	6-25/32	6-25/32	13-19/32	7-19/32	9.51
801-080	8	4-13/16	4-13/16	8- 7/8	8- 7/8	17- 3/4	9-23/32	21.03
801-080F	8	7- 5/8	7- 5/8	11- 7/8	11- 7/8	23- 3/4	9- 5/8	17.16

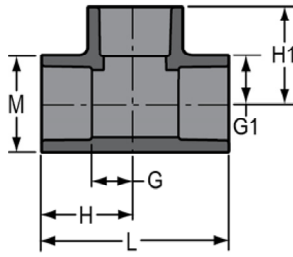


Schedule 80 Fittings

Tee

Socket x Socket x Socket

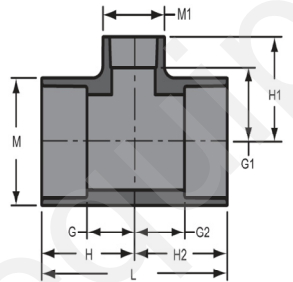
(Continued)



Part Number	Size	G	G1	H	H1	L	M	Approx. Wt. (Lbs.)
801-100	10	5-15/16	5-29/32	10-29/32	10-29/32	21-13/16	12-3/16	37.89
801-100F	10	9	9	14- 1/4	14- 1/4	28- 1/2	11-15/16	39.85
801-120	12	6-15/16	6-15/16	12-15/16	12-15/16	25- 7/8	14- 1/4	54.44
801-120F	12	11- 1/4	11- 1/4	17- 1/2	17- 1/2	35	14- 1/8	68.42
801-140	14	7- 1/32	7- 1/32	14- 7/32	14- 1/32	28- 7/16	15-21/32	127.21
801-140F	14	12- 1/4	12- 1/4	19- 1/4	19- 1/4	38- 1/2	15- 1/2	90.74
801-160F	16	13	13	21	21	42	17-11/16	144.86
801-180F	18	13- 3/4	13- 3/4	22- 3/4	22- 3/4	45- 1/2	19- 7/8	170.14
801-200F	20	16- 3/8	16- 3/8	26- 3/8	26- 3/8	52- 3/4	22- 1/16	246.44
801-240F	24	20- 1/4	20- 1/4	32- 1/4	32- 1/4	64- 1/2	26- 7/16	422.65

Tee - Reducing

Socket x Socket x Socket



Part Number	Size	G	G1	G2	H	H1	H2	L	M	M1	Approx. Wt. (Lbs.)
801-101	3/4X1/2	19/32	23/32	19/32	1-19/32	1-19/32	1-19/32	3- 3/16	1-13/32	1- 3/16	.13
801-130	1X1/2	19/32	7/8	19/32	1-23/32	1- 3/4	1-23/32	3- 7/16	1- 3/4	1- 3/16	.19
801-131	1X3/4	11/16	27/32	11/16	1-53/64	1-27/32	1-53/64	3-21/32	1- 3/4	1-13/32	.22
801-157	1-1/4X1X3/4	23/32	1- 1/16	11/16	1-7/8	2- 1/16	1-15/16	3-3/4	2-2/32	1- 7/16	.30
801-158	1-1/4X1X1	13/32	15/16	13/32	2- 1/8	1-31/32	1-15/16	4	2- 1/16	1-11/16	.32
801-159	1-1/4X1X1-1/4	15/16	1- 1/32	7/8	2- 3/16	2- 5/32	2- 1/8	4- 5/16	2- 1/16	2- 1/16	.39
801-166 ¹	1-1/4X1/2	7/8	1-13/32	7/8	2- 3/32	2- 3/8	2- 3/32	4- 7/32	2- 1/8	1- 3/4	.30
801-167	1-1/4X3/4	5/8	31/32	5/8	1-15/16	1-31/32	1-15/16	3- 7/8	2- 1/8	1-13/32	.27
801-168	1-1/4X1	27/32	1- 1/32	27/32	2- 3/32	2- 5/32	2- 3/32	4- 7/32	2- 3/32	1- 3/4	.34
801-202	1-1/2X1-1/4X1	7/8	1- 7/32	7/8	2- 1/4	2-11/32	2- 1/4	4- 1/2	2- 7/16	1-13/16	.39
801-209	1-1/2X1/2	9/16	1- 1/16	9/16	1-31/32	1-15/16	1-31/32	3-15/16	2- 3/8	1- 3/16	.33
801-210	1-1/2X3/4	11/16	1- 1/32	11/16	2- 1/16	2- 1/32	2- 1/16	4- 5/32	2-11/32	1-13/32	.36
801-211	1-1/2X1	27/32	1- 5/32	27/32	2-15/32	2- 5/16	2-15/32	4-15/16	2-11/32	1- 3/4	.41
801-212	1-1/2X1-1/4	1- 3/16	1- 3/16	1- 3/16	2- 9/16	2- 7/16	2- 9/16	5- 1/8	2- 3/8	2- 1/8	.51
801-247	2X1/2	9/16	1-13/32	9/16	2- 3/32	2- 9/32	2- 3/32	4- 3/16	2- 7/8	1- 5/32	.43
801-248	2X3/4	11/16	1-13/32	11/16	2- 3/16	2-13/32	2- 3/16	4- 3/8	2-27/32	1- 3/8	.51
801-249	2X1	27/32	1- 7/16	27/32	2- 3/8	2- 9/16	2- 3/8	4- 3/4	2- 7/8	1- 3/4	.57
801-250 ¹	2X1-1/4	31/32	1-11/32	31/32	2-17/32	2-19/32	2-17/32	5- 3/32	2- 7/8	2- 1/8	.61
801-251	2X1-1/2	1- 5/32	1-13/32	1- 5/32	2-11/16	2-13/16	2-11/16	5- 3/8	2-15/16	2-15/32	.77
801-254 ¹	2X2X4	3-11/16	2-15/32	3-11/16	5- 3/16	4-23/32	5- 3/16	10-11/32	5- 1/4	5- 1/4	5.53
801-287	2-1/2X1/2	19/32	1-19/32	19/32	2- 3/8	2-15/32	2- 3/8	4-23/32	3- 1/2	1- 3/16	.74